

2500/31/01

NATIONAL
QUALIFICATIONS
2013

FRIDAY, 3 MAY
1.30 PM – 2.25 PM

MATHEMATICS
STANDARD GRADE
Credit Level
Paper 1
(Non-calculator)

- 1 You may **NOT** use a calculator.
- 2 Answer as many questions as you can.
- 3 Full credit will be given only where the solution contains appropriate working.
- 4 Square-ruled paper is provided inside your answer booklet.

Use **blue** or **black** ink. Pencil may be used for graphs and diagrams only.



FORMULAE LIST

The roots of $ax^2 + bx + c = 0$ are $x = \frac{-b \pm \sqrt{(b^2 - 4ac)}}{2a}$

Sine rule: $\frac{a}{\sin A} = \frac{b}{\sin B} = \frac{c}{\sin C}$

Cosine rule: $a^2 = b^2 + c^2 - 2bc \cos A$ or $\cos A = \frac{b^2 + c^2 - a^2}{2bc}$

Area of a triangle: $\text{Area} = \frac{1}{2} ab \sin C$

Standard deviation: $s = \sqrt{\frac{\sum (x - \bar{x})^2}{n-1}} = \sqrt{\frac{\sum x^2 - (\sum x)^2 / n}{n-1}}$, where n is the sample size.

1. Evaluate

$$86.5 - 3.651 \times 20.$$

KU RE

2

2. Evaluate

$$\frac{1}{2} \div 2\frac{2}{3}.$$

2

3. A group of people attended a course to help them stop smoking.

The following table shows the statistics before and after the course.

	<i>Mean number of cigarettes smoked per person per day</i>	<i>Standard deviation</i>
Before	20.8	8.5
After	9.6	12.0

2

Make **two** valid comments about these results.

4. Change the subject of the formula to r .

$$A = 4\pi r^2.$$

2

[Turn over

5. 150 patients have been given a flu vaccine.

The data is shown in the table below.

<i>AGE</i>	<i>GENDER</i>	
	<i>male</i>	<i>female</i>
5 or under	4	3
6 – 15	7	8
16 – 59	37	47
60 or over	12	32

What is the probability that

(a) a patient given the flu vaccine was male **and** aged 60 or over?

1

(b) a patient given the flu vaccine was aged 5 or under?

1

6. Joan buys gold and silver charms to make bracelets.

2 gold charms and 5 silver charms cost £125.

(a) Let g pounds be the cost of one gold charm and s pounds be the cost of one silver charm.

Write down an equation in terms of g and s to illustrate the above information.

1

4 gold charms and 3 silver charms cost £145.

(b) Write down another equation in terms of g and s to illustrate this information.

1

(c) Hence calculate the cost of each type of charm.

3

7. (a) Expand and simplify

$$(2x - 5)(x^2 + 3x - 7).$$

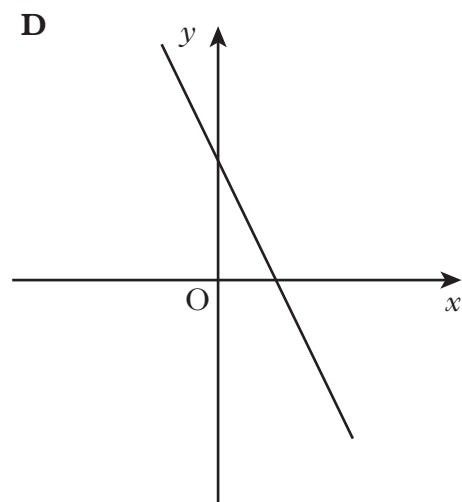
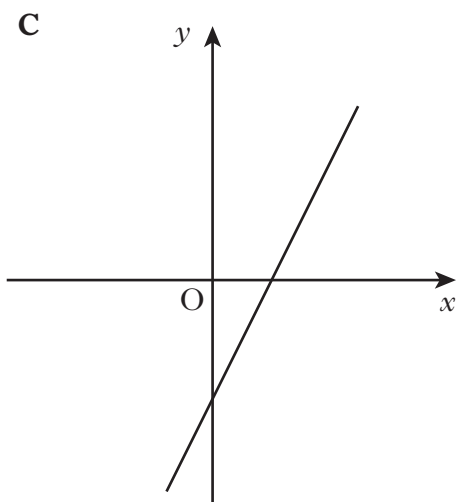
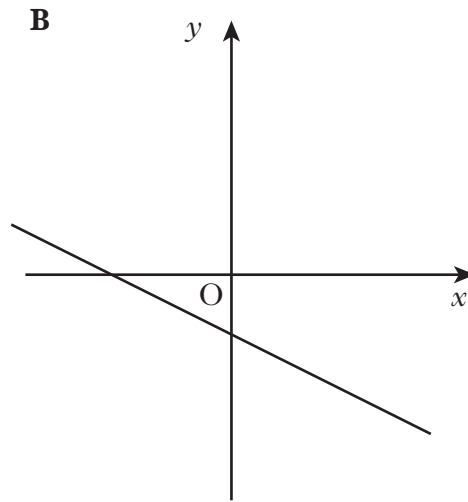
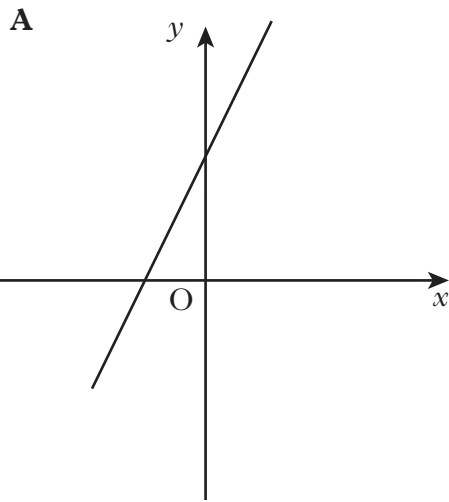
(b) Solve the inequality

$$4x - 5 \leq 7x - 20.$$

3

3

8. Four straight line graphs are shown below.



Which one of these above could represent the line with equation $2x + y = 3$?

Give two reasons to justify your answer.

3

KU	RE
1	3

11. Jenny is doing calculations using consecutive numbers.

She notices a pattern which always gives an answer of 1.

Using 2, 3, 4 gives $3^2 - 2 \times 4 = 1$.

3, 4, 5 gives $4^2 - 3 \times 5 = 1$.

4, 5, 6 gives $5^2 - 4 \times 6 = 1$.

(a) Using 8, 9, 10, write down a similar pattern.

(b) Using n , $(n+1)$, $(n+2)$, show that the answer is 1 for any three consecutive numbers.

[END OF QUESTION PAPER]

[BLANK PAGE]