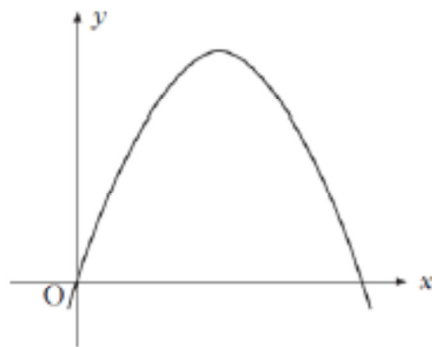


National 5 Revision HW 1

Express the following in the form $(x + a)^2 + b$:

$$x^2 - 8x + 19$$

The graph shown below is part of the parabola with equation $y = 8x - x^2$.



(a) By factorising $8x - x^2$, find the roots of the equation

$$8x - x^2 = 0.$$

(b) State the equation of the axis of symmetry of the parabola.

(c) Find the coordinates of the turning point.