

1

(c) A curve is given by the parametric equations

$$x = 6t \text{ and } y = 1 - \cos t.$$

Find $\frac{dy}{dx}$ in terms of t .

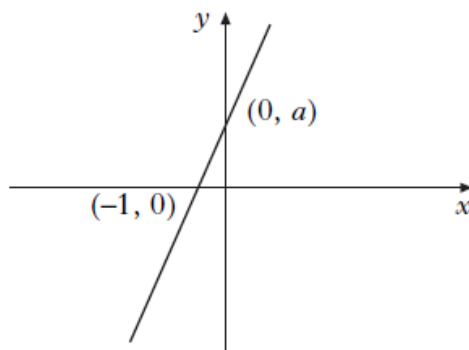
2

2

Express $\frac{13-x}{x^2+4x-5}$ in partial fractions

3

3



The diagram shows part of the graph of a function $f(x)$. Sketch the graph of $|f^{-1}(x)|$ showing the points of intersection with the axes.

4